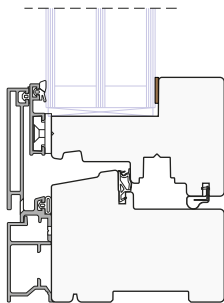
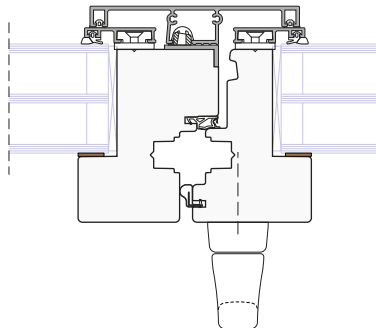


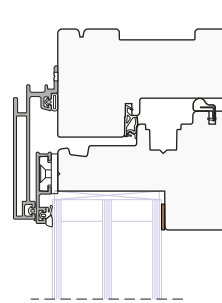
SLIM



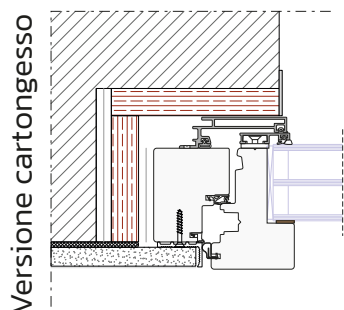
Nodo Inferiore



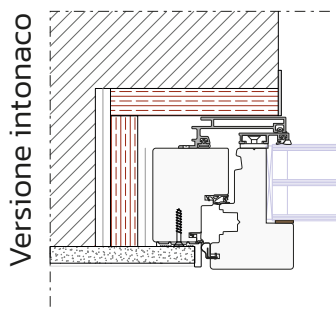
Nodo Centrale

Nodo Superiore/
Nodo Laterale

RASO MURO



Versione cartongesso



Versione intonaco

Sezione telaio: sp. 80 x 50 mm (escluso alluminio)

Sezione anta: sp. 80 x 55 mm (escluso alluminio)

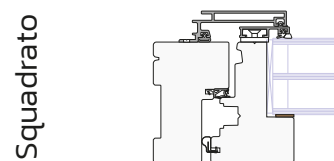
- Telaio legno rivestito in alluminio
- Tre guarnizioni
- Incollaggio strutturale vetro

Essenze lamellari:

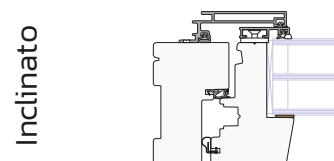
Abete / Frassino / Larice / Pino / Pino FJ / Red Grandis / Rovere

	Aria	Classe 4
	Acqua	Classe 9A
	Vento	Classe C4
	Resistenza carichi	350 N
Dispositivi di sicurezza		
	Sostanze dannose	Assenti
	Termica	Fino a 0.83 W/m2k
	Acustica	Fino a 38 dB
	Antieffrazione	Fino a RC2 (legno duro)

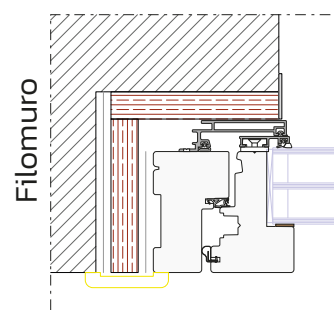
VARIANTI



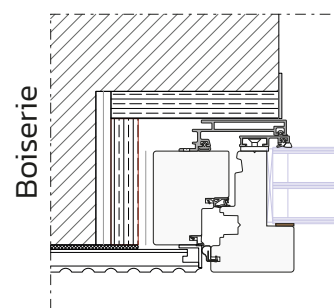
Squadrato



Inclinato



Filomuro



Boiserie

